



The SEKONIC website provides information on all of our latest OMRs
<http://english.sekonic.co.jp/>

Powerful & Versatile OMR

World's top speed of 11,000 sheets/hr.



SPECIFICATIONS

Read Sensor	Read Head	1 (Single side) or 2 (Dual sides)
	Mark Discrimination	16 Steps (256 Degrees)
	Light Source	Infra Red Ray(940nm) or Visible Red Ray(660nm)
	Mark Implements	Infra Red Ray: Pencil only Visible Red Ray: Pencil+ Pen(Blue or Black)
	Read head Channels	1/6"(48 Channels), 0.2"(40Channels), 0.25"(33Channels), or 0.3" (27 Channels)
	Mark Sharpes	Rectangle Oval and Circles
	Read technique	Reading reflective sensor
Scanning	Error detection	Automatic Paper Discharge, Sheet Empty, Double feeding, Timing mark ,Left end skew Left sheet on the (eject) tray
Interface		USB2.0(High Speed)
Operation	LCD display	40 Characters(20 characters x 2 lines)
	Operation button	5 buttons
Hopper	Hopper Capacity (*1)	500 sheets <Option> A4 sheet loading assist
Mark sheet	Marksheet Size	Card (IBMcard) B5 A4 8.5" 9"
	Marksheet width	82.55 to 228.6mm (3.25" to 9")
	Marksheet length	187 to 304.8mm(7.36" to 12.0")
	Rows	80 rows
	Columns	48columns(1/6") 40columns(1/5") 33columns(1/4") 27columns(1/3")
	Form Quality	High Quality paper or OCR paper
	Thickness	72-135kg (0.11-0.19mm / 83.8 g/ m ² to 157g/ m ²)
	Feed Speed	Up to 11,000/hour
	Suction system	In the device

Printer	Printing method	Ink Jet
	Print contents (*2)	Fixed characters (Max 20 bytes) Sequence number (Max 8 digits) Date, time(yyy/mm/dd hh:mm:ss)
	The number of printable characters	Max 28 characters
	Type of Characters	Alphabet, Numeric, Japanese (Kana)
	Character size	H:3mm W:4mm-6.4mm (H:0.1" W:0.15"-0.25")
	Character gap	0.8mm-92mm (0.03" - 3.62")
	Print Pixels	H: 12pixels W: 9pixels
	Print position	On top Main scan direction: Adjust head position by manually Sub scan direction: Set start position by program
	Ink Cartridge (*3)	Expire: 6months after open the package or print 1,000,000 characters
	Exit Tray	Tray capacity
Power	Voltage / Relatives	AC100-240V 50-60Hz
Conditions	Temperature	5-35 °C (41-95F)
	Humidity	30-80%
Dimension	W x H x D	800 x 490 x 365 (mm) 31.5 x 19.3 x 14.3 (*)
Weight		37Kgs (81.5Lbs)
Accessories	User manual, A4 Check sheets, A4 mark entry sheets, USB cable, Power cable, Ink Cartridge, Exit Trays	

*1: Measured by 90Kg form(0.13mm)

*2: Use Markview software

*3: The expire of Ink cartridge may vary depending on user condition

SEKONIC is Japan's leading manufacturer of OMR scanners. The integration of optical, mechanical, and mark recognition technologies has been key to SEKONIC's ceaseless R&D efforts since our establishment. Currently, many of our Japanese customers use SEKONIC OMR scanners not only for test scoring, but also for surveys, investigations, elections, and in many other fields. The brand new SR-11000 incorporates all of SEKONIC's technologies while its design reflects the requests and desires voiced by many of our users. Once you have seen the SR-11000 in operation we know you be impressed by its high levels of performance and quality.

SEKONIC CORPORATION

7-24-14, Oizumi-Gakuen-Cho, Nerima-Ku, Tokyo 178-8686
 Phone: Phone: +81-3-3978-2375 Fax: +81-3-3978-5229
<http://english.sekonic.co.jp/>

Safety Note Read the instruction manual thoroughly before attempting to use the product.

※Notes on Brochure ●Features and specifications are subject to change without notice.
 ●Details and colors of the image might be different from ones of real product

Powerful:^{*1}
11,000sheet/hr feed.^{*2}

SEKONIC is proud to announce our SR-11000 premium OMR model with the world's fastest reading speed of 11,000 sheets per hour.

With intelligent new data transfer and high-speed feed control systems controlled by the high-performance CPU and buffer, SEKONIC's technology is at the forefront of OMR development. The SR-11000's unparalleled high-speed processing allows you to quickly process large volumes of OMR sheets in no time at all, saving significant amounts of time, effort, and money.

The SR-11000 is the flagship SEKONIC OMR model that combines the world's fastest speed with cutting-edge functions and sophisticated design.

*1 For desktop-type OMR. As of January 2013, according to our own research.

*2 Converting the processing time per sheet, calculated based on the time for 500 sheets (9x12 inches), into the number of sheets processed per hour.



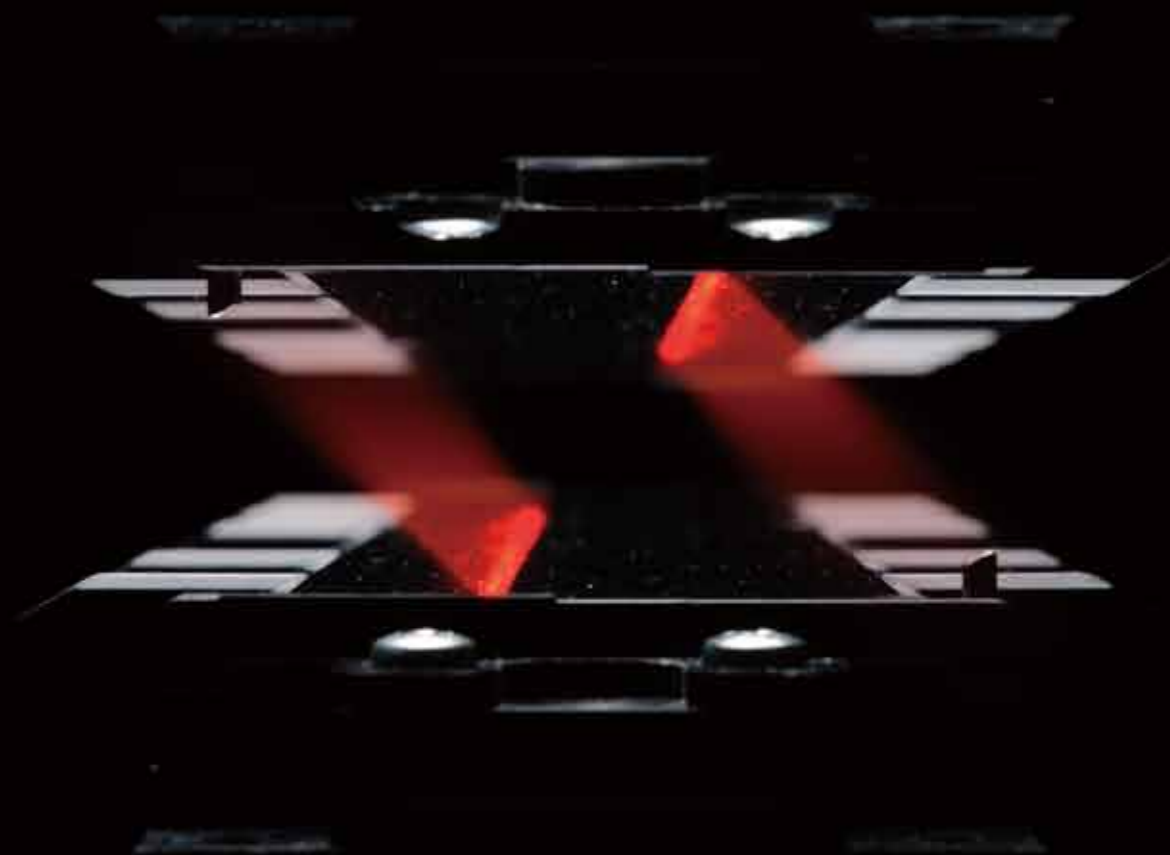
Versatile:
Accuracy rate 99.99%^{*3}

The SR-11000 uses a high-precision sensor unit that has been designed exclusively for use with OMR sheets.

This sensor unit incorporates SEKONIC's optical and mark recognition technologies that we have developed over many years. Mechanisms that have been developed specifically for high-precision OMR applications are fully utilized in the machine,

giving a reading accuracy of 99.99%. The machine accurately reads important OMR sheets such as tests and surveys. The reliability of the processing results has prompted a wide variety of companies, including many administrative, educational, and medical institutions, to adopt the SR-11000.

*3 Under our own test conditions. Results may vary depending on the status of filled-in marks or sheets. Performance is not guaranteed.



*OMR sheets are normally discharged face-down. The image shows the sheets face-up for illustrative purposes only.

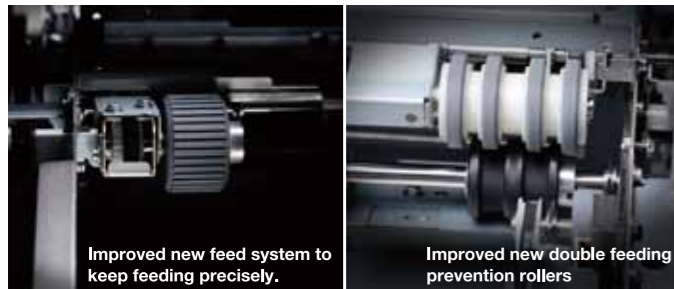
※The image is for illustrative purposes only.

Advanced mechanism supporting the world's fastest reading, and usability from a thorough pursuit for ease of use

The SR-11000 has a reading accuracy of 99.99% while offering the world's fastest reading speed of 11,000 sheets per hour. This high level of performance is enabled by combining several mechanisms that incorporate SEKONIC's optical technology and mechatronics. The high reliability and usability of the SR-11000 significantly improve the efficiency of OMR sheet processing.

Advanced paper handling technology that ensures stable sheet feeding and handling

Our unique advanced paper handling technology provides stable sheet feeding and handling, even at ultra-high processing speeds of 183 sheets per minute. The new double function roller (Paper feed roller) accurately picks up and aligns sheets during paper loading, while the double feeding prevention rollers delicately and correctly feeds the sheets in the same way as human fingers can turn pages. Together, these prevent damage to the sheets and do not smudge the marks.



Unique suction system that eliminates the causes of read errors

Our precisely designed misread prevention system is incorporated into the SR-11000. The new system can suction up materials, such as eraser shavings, sheet dust, and dirt, which can cause read errors, before the sheets reach the mark reading sensor. This new mechanism greatly reduces the number of cleaning cycles needed for the reading sensors, thus minimizing maintenance effort and cost.



One-size-fits-all stopper with improved sheet alignment for better work efficiency Adjustable sheet stopper

The stopper accurately collects the OMR sheets as they are being discharged at high speed. With a guide scale for nine standard sheet sizes, it can be adjusted for any sheet size with no steps. Large numbers of discharged sheets can be stacked, leading to a major improvement in work efficiency for removed sheets.



Built-in ink-jet printer that reduces the work to be performed after sheet processing

The built-in ink-jet printer prints information, such as consecutive numbering or dates, on each sheet. The printing position can be easily adjusted with the indicator. This greatly reduces the time needed for sorting processed sheets.



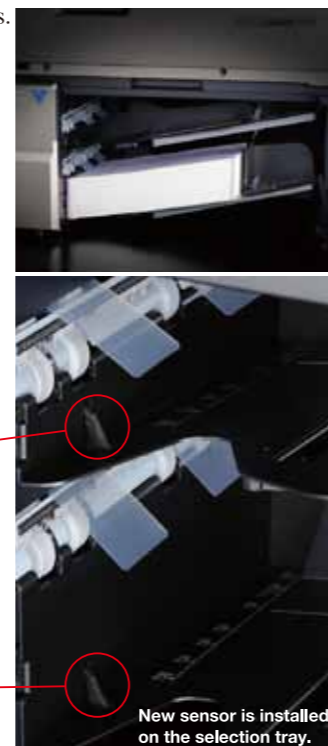
New Prism Position Sensors that constantly monitor high speed feeding.

The SR-11000 has 11 position sensors, including the new Prism Position Sensors, which precisely monitor the paper handling. The sensors constantly monitor the sheets as they are being fed at high speed to ensure precise feeding. If a feed error is detected during operation, sheet feeding is immediately stopped to avoid or reduce damage to the following OMR sheets.



Sheet detection sensor in the stacker that prevents users from forgetting to remove important OMR sheets

The SR-11000 has individual sensors installed in the main and selection trays to eliminate the danger of users forgetting to remove OMR sheets. Leaving OMR sheets in the tray during busy periods can result in much time being wasted sorting processed sheets. The SR-11000 is designed to prevent human errors caused by the likes of forgetting to remove sheets.



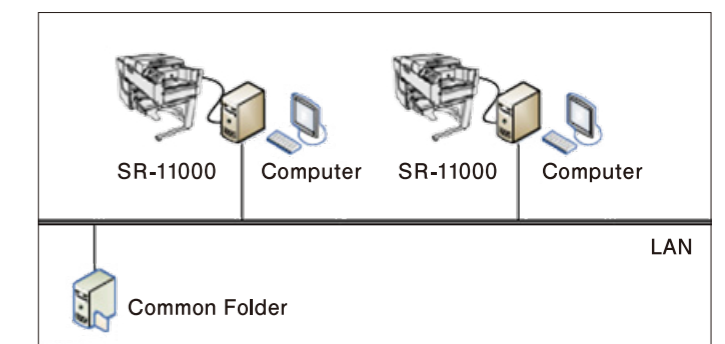
Reverse discharge function that discharges sheets in their original order

A reverse discharge function discharges the OMR sheets in their original order. Simply turning the discharged stack upside-down restores the order in which the sheets were loaded into the machine. In addition, the tray design lets you easily remove the sheets from the front of the machine. In ways like this, we are constantly focusing on improving user-friendliness.



USB interface for building a distributed network

The SR-11000 has a USB 2.0 (High Speed) interface. The processing speed can be increased by configuring a distributed network with multiple SR-11000 units. By using two SR-11000 units, for example, you can process 22,000 sheets per hour, twice the number that is possible with one unit. This would be useful when there is a need to process very large volumes of sheets in a short time or when processing OMR sheets during the busiest times of the year.



Multi Layout for mixed types of OMR sheets

Even a mixture of different types of OMR sheets* can be read based on individual mark rules and then output as distinct data.
*Sheets must be of the same size and use the same mark pitch.

Sheet loading system that lets you easily load large volumes of OMR sheets (Optional)A4 sheet loading assist

With the sheet loading system, you can prepare and load large numbers of OMR sheets at one time - up to 500 sheets - in the OMR sheet loading table (hopper) for processing as soon as the current batch of OMR sheets has been processed. This reduces the amount of time and effort needed to straighten and load the OMR sheets and efficiently supports high-speed and large-volume sheet processing.

